

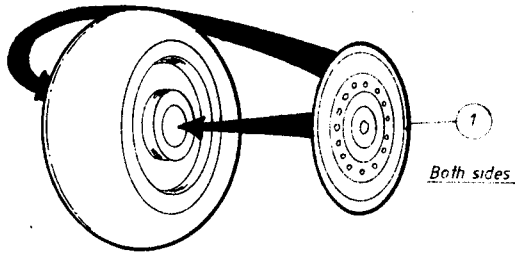
AIRWAVES

AC72-163 Sea Venom exterior

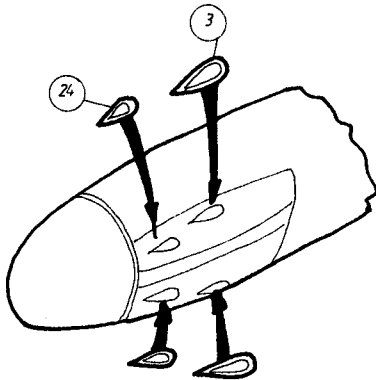
The Detail set is manufactured from photo etched brass sheet and is for the Toko / Frog model kit.
 Etched brass should be thoroughly cleaned and primed for painting. To separate parts support fret on a firm surface and cut as near to the part as possible using a sharp blade.
 To fold part use Airwaves Folding Tool AM022 for good and even fold.
 For fixing parts use superglue or epoxy resin
 Manufactured for and by,
**E.D.Models 64 Stratford Road, Shirley,
 Solihull, B90 3LP, England.
 Phone (44)-0121-744-7488. FAX. (44) 0121-733-2591.**

For further helpful hints to using etched brass and for full details of the extensive Airwaves range including tools and templates get a copy of the latest Airwaves catalogue

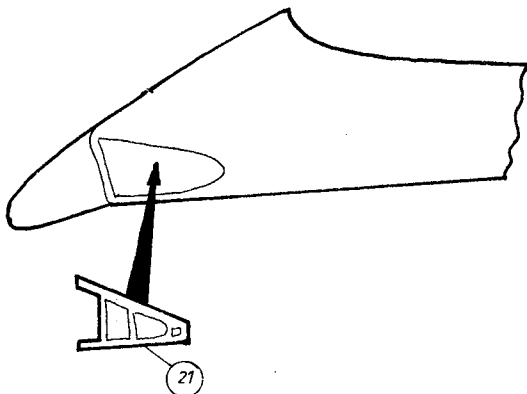
1 WHEELS



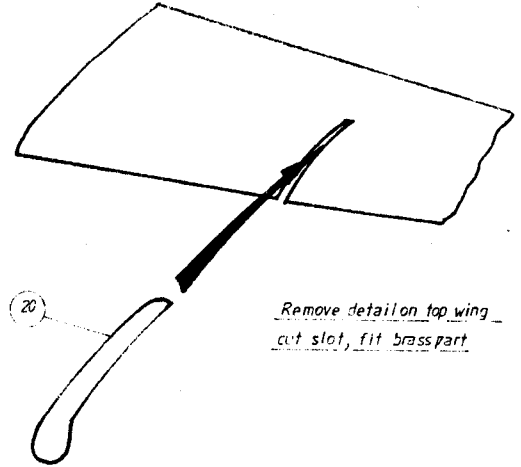
2 GUNPORTS



3 INTAKES

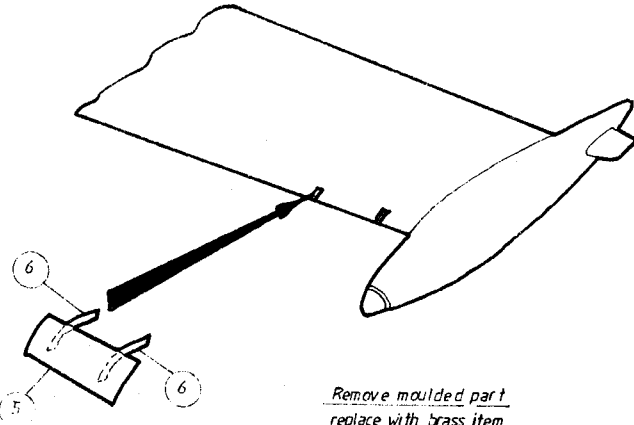


4 WINGFENCES



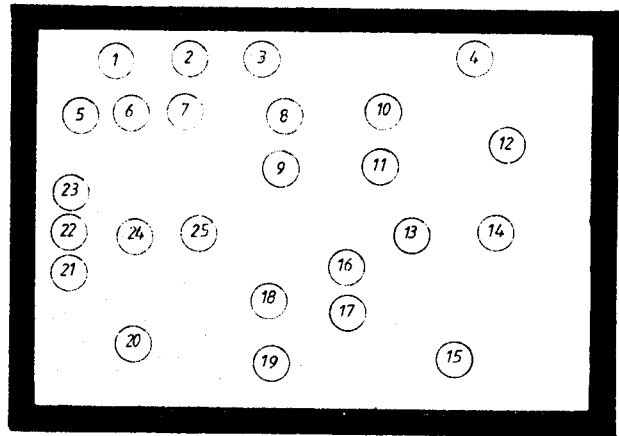
Remove detail on top wing
 cut slot, fit brass part

5 SLATS

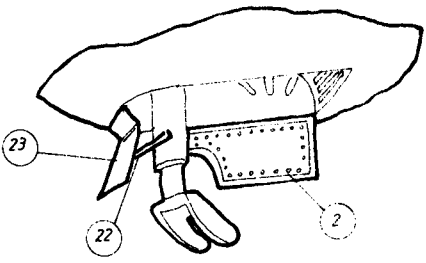
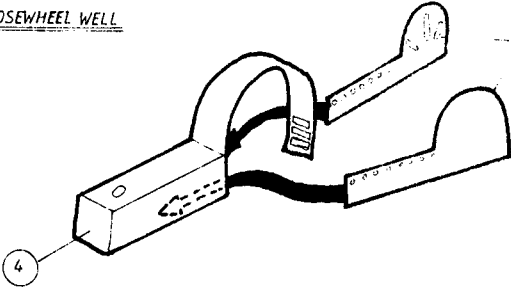


Remove moulded part
 replace with brass item

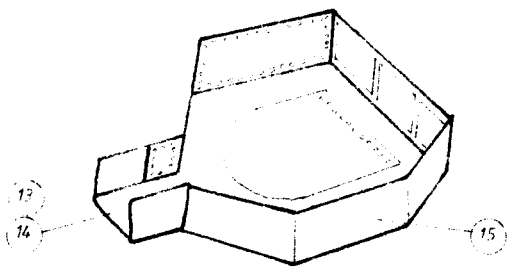
6 COMPONENT FRAME LAYOUT



7 NOSEWHEEL WELL



8 MAIN WHEEL WELL



Carefully fit into wheelwells
Loose parts (15, 12) replace kit parts.

9 WINGFOLDS

